



Electric Smart Crease

Model CR828



Owner/Operator Manual

Specifications


Speed	800 Cycles/Hour
Sheet Size Minimum (L x W)	2.00" x 0.25" (8.0cm x 0.5cm)
Sheet Size Maximum (L x W)	28.00" x 18.20" (71.0cm x 46.2cm)
Maximum Paper Weight	16 pt / 0.016" Caliper/ 130# Cover / 341 gsm
Crease Width	0.075" (1.9mm)
Crease Depth	0.015" (0.4mm)
Dimensions (L x W x H)	24" x 20.6" x 6.9" (61cm x 52.3cm x 17.5cm)
Shipping Weight	40 lbs
Electrical	110-120VAC, 50/60 Hz, 2.5 Amp
Plug (North America)	Nema 5-15


Serial No. _____


1.0 Introduction



Thank you for selecting the Martin Yale Electric Smart Crease. We recommend that you familiarize yourself with the creaser by carefully reading these instructions. A thorough understanding of the information contained within these instructions will help to eliminate most operator associated errors and ensure years of trouble-free performance.


2.0 Safety Notes


 The creaser may not be operated by more than one person at any given time! The machine was designed for safe operation by “one person only”.


 During the creasing process no other work may be performed on the machine (for example cleaning, etc.).

 The Creaser is not a toy, and is not suitable for use by children! The overall technical safety concept of this machine (dimensions, feed opening, etc.) does not provide for any guarantee regarding hazard-free operation by children.

  Danger of injury! Keep all loose articles of clothing, ties, jewelry, long hair, or other loose objects away from opening.


 Danger of injury! Never insert fingers into opening.


 In case of danger, switch the creaser off with the mains switch or unplug the machine.


 Always unplug the machine from the mains power supply before opening the machine. Repairs may only be performed by trained personnel!

 Warning: Moving parts can crush and cut!

 Warning: Electrical Hazard!

 This unit should be fed with card stock! Creasing other types of materials can cause injuries or may damage the electric creaser (e.g. destruction of the unit)

 The socket outlet shall be installed near the equipment and shall be easily accessible.

 Only operate this machine in an enclosed office environment. Keep enough distance to the surroundings when installing the machine.

3.0 Features

3.1 Overview (Figure 1)

1. Back Paper Stop
2. Paper Guides with Rulers
3. Front Paper Stop
4. Work Surface
5. Power Supply
6. Control Panel
7. Footpedal

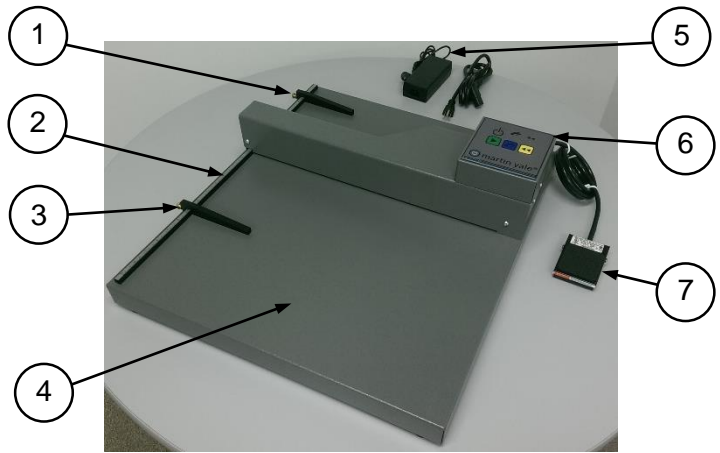


FIGURE 1: Overview

3.2 Control Panel (Figure 2)

1. Green Power Indicator
2. Footpedal On/Off Indicator
3. Reverse (Dejam) Indicator
4. Cycle Pushbutton
5. Footpedal On/Off Pushbutton
6. Reverse (Dejam) Pushbutton

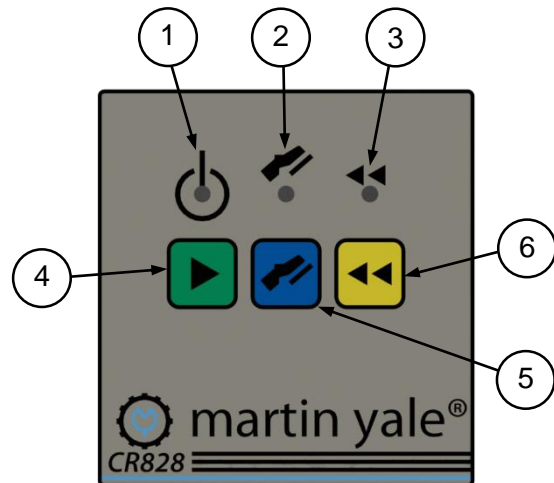


FIGURE 2: Control Panel

3.3 Rear View (Figure 3)

1. Power Switch
2. Footpedal Cable
3. Power Supply Jack



FIGURE 3: Rear View

4.0 Setup

- 4.1 Prepare a flat, level, sturdy work area on which to set the creaser.
- 4.2 Carefully remove the creaser from the packaging and set on work area.
- 4.3 All six (6) rubber foot pads should be in contact with the work area.
- 4.4 Inspect creaser for shipping damage and/or missing components.
- 4.5 Remove two (2) Paper Stops from packaging and install as shown. (Figure 1)
- 4.6 Position Foot Pedal on the floor in a convenient and comfortable location.
- 4.7 Plug the Power Adapter into the back of the machine next to the Foot Pedal cable, then plug the Power Adapter into power outlet. (Figures 1 and 3)

Congratulations! Your brand new Martin Yale Electric Smart Crease is now ready for use!

5.0 Operation

- 5.1 Slide each Paper Stop into the desired position, then hand-tighten thumb screws. (Figure 4)
See the chart below as a guide for some common paper/card sizes and fold types.

Paper Size	Fold Type	Back Paper Stop	Front Paper Stop
8½" x 11"	Card	5 ½"	Not Used
	Letter/Z	7 5/16"	7 5/16"
11" x 17"	Card	8 ½"	Not Used
	Letter/Z	5 5/8"	Rotate Paper
Card Size	Fold Type	Back Paper Stop	Front Paper Stop
A2 (4¼" x 5½")	Card	4¼"	Not Used
	Gate	2 1/8"	2 1/8"
A6 (4½" x 6¼")	Card	4½"	Not Used
	Gate	2¼"	2¼"
A7 (5" x 7")	Card	5"	Not Used
	Gate	2½"	2½"

NOTE: Always test setup on scrap paper to ensure proper settings; adjust as necessary.

- 5.2 The Footpedal control is turned on by default; to turn off the Footpedal, press the center button on the Control Panel. (Figure 2)

NOTE: Cycle Pushbutton will work with foot pedal either on or off.

- 5.3 With inside face DOWN, slide paper into Creaser along the paper guide until it contacts Back Paper Stop. (Figure 5)

NOTE: Align edge of paper with Paper Guides; DO NOT align edge of paper with Paper Stops.



FIGURE 4: Adjust Paper Stops



FIGURE 5: Paper Against Back Paper Stop

- 5.4 While holding paper in place, press the Footpedal (Figure 1) or Cycle Pushbutton (Figure 2).
5.5 Wait for the Creaser to cycle once; cycle time is approximately 1 second.
5.6 For single crease operation *only*: remove paper and fold as shown (Figures 6 and 7).
5.7 For performing a second crease operation:
5.7.1 Slide paper to Front Paper Stop (flip inside face up for Z fold); repeat steps 5.4-5.5.
5.7.2 For larger paper where 2 stops are not used, rotate paper 180°, slide paper to Back Paper Stop (flip inside face up for Z fold) and repeat steps 3.4-3.5.
5.7.3 Remove paper and fold all creases as shown (Figures 6 and 7).
5.8 Check edges for alignment and square. Make any fine adjustments as necessary.

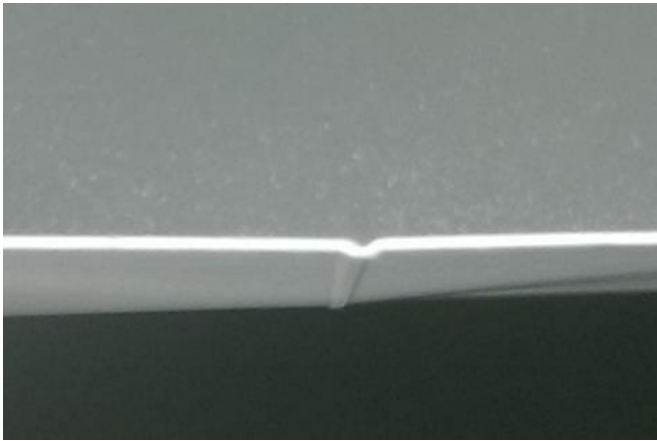


FIGURE 6: Note Orientation of Crease

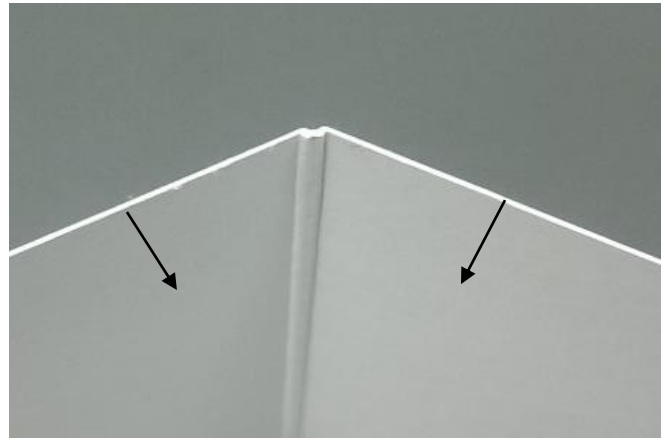


FIGURE 7: Fold Panels Downward as Shown

6.0 Maintenance

The Martin Yale Model CEZ Creaser typically requires very little maintenance, however the following items will ensure years of trouble-free, safe and satisfactory use:

- 6.1** Clean unit as needed with a slightly damp rag using water or window cleaner.
- 6.2** Periodically use a can of compressed air to blow out dust and debris from the Creaser slot.
- 6.3** Frequently check the Power Supply and Footpedal wires for damage and wear.

7.0 Troubleshooting

7.1 No Power, Green Power LED is off:

- 1. Unit not plugged in or outlet is dead; check connections.
- 2. Power switch is off; turn switch on.
- 3. Desktop power supply is damaged; replace power supply.
- 4. Electrical failure; have unit serviced by qualified technician.

7.2 Creaser will not function, Green Power LED is on:

- 1. Creaser unit jammed; see “Machine Jam” instructions below.
- 2. Self-resetting circuit breaker in Creaser has tripped; turn unit off for 15 seconds to reset.
- 3. Electrical failure; have the unit serviced by qualified technician.

7.3 Machine Jam: If the Creaser jams, both yellow lights will blink on and off repeatedly.

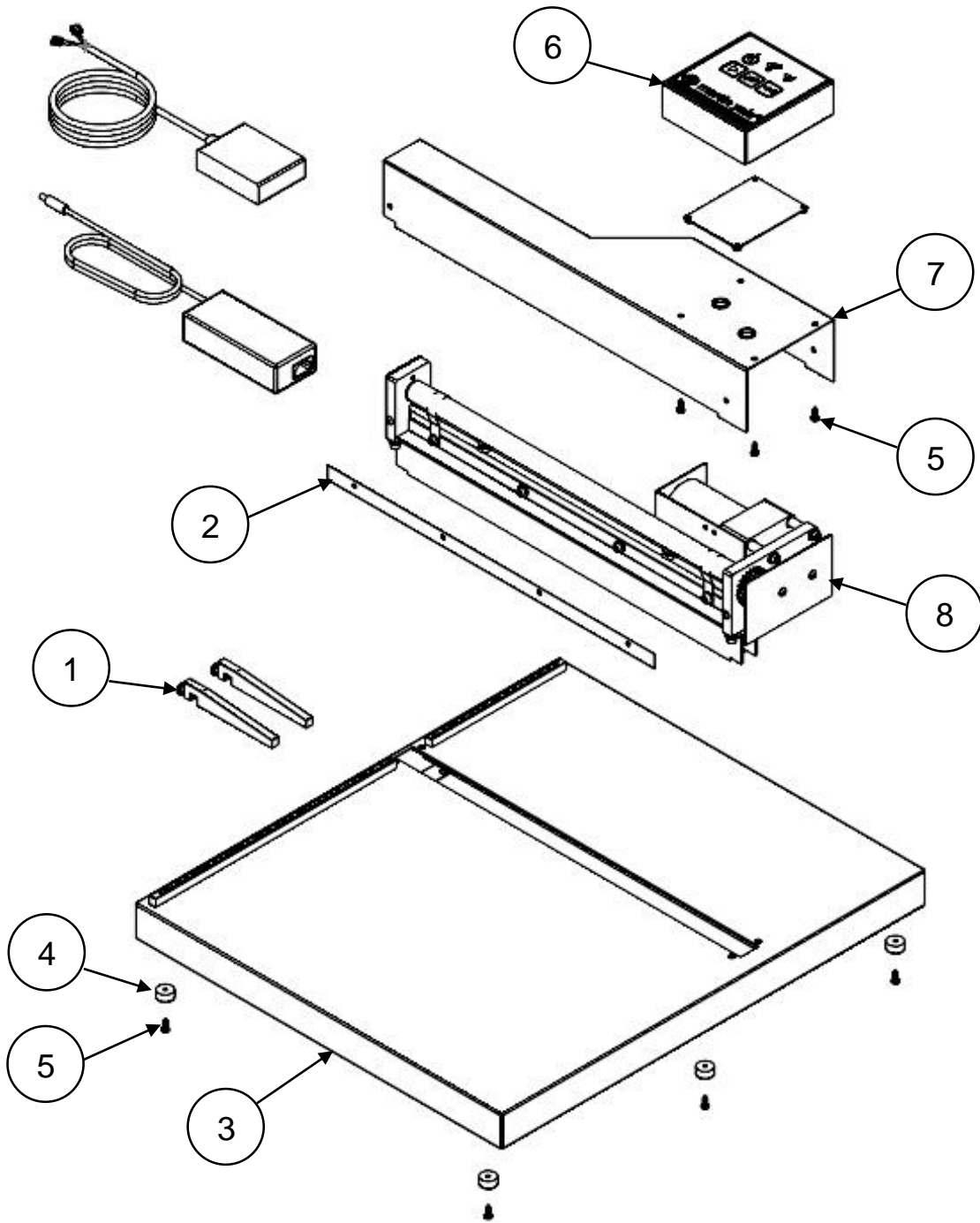
- 1. Press the Reverse (Dejam) Pushbutton (Figure 2). The Reverse (Dejam) Indicator light will now be lit continuously.
- 2. Press the Cycle Pushbutton; this will cause the machine to reverse, releasing the jam.
- 3. Remove paper and correct the cause of the jam before attempting another crease. Typical causes of jams include foreign objects and improper paper size or thickness.
- 4. If jam will not clear, contact Technical Support.

Note on the Reverse (Dejam) function: Under normal machine operation, the creaser is not allowed to run in reverse. To test the reverse feature, *hold* the Reverse (Dejam) Pushbutton down while pressing the Cycle Pushbutton. This action forces the Creaser to run in reverse and should *only* be used to confirm proper function of the reverse feature.

For continued malfunction or other issues, contact Technical Support at 1-800-225-5644.

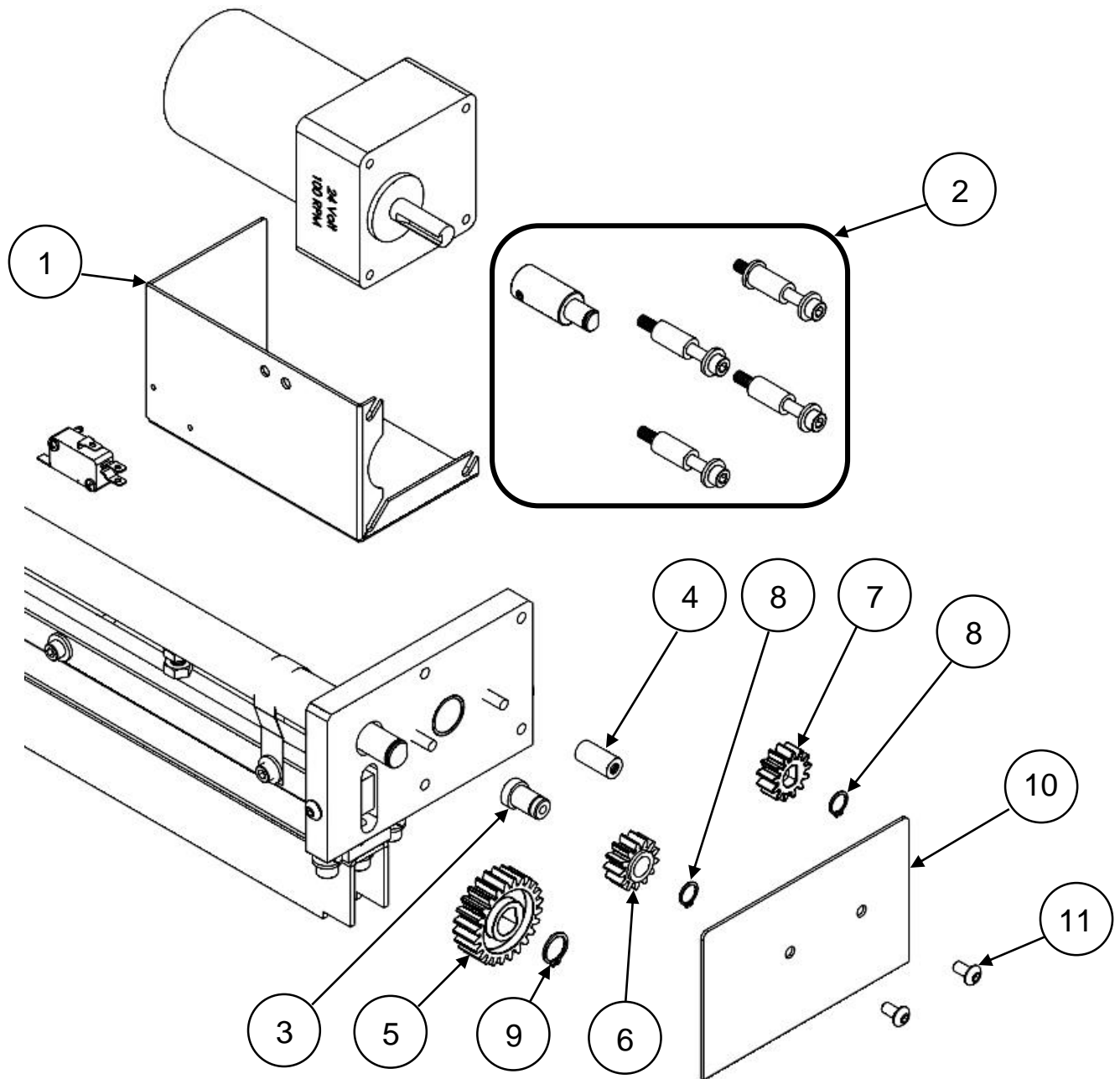
8.0 Parts Diagrams

8.1 Diagram A



ITEM	PART NO.	DESCRIPTION	QTY
1	WRA818033	REPLACEMENT PAPER STOP ASSEMBLY	2
2	WRA818009	REPLACEMENT BLADE	1
3	WRA818005	REPLACEMENT BASE ASSEMBLY	1
4	M-S030045	755 RW BUMPER	6
5	M-S001169	#8 X 1/2 PHILLIPS PAN HEAD SCREW	10
6	WRA828015	REPLACEMENT CONTROL HOUSING ASSEMBLY	1
7	WRA828005	REPLACEMENT TOP COVER	1
8	WRA828019	REPLACEMENT CREASING ASSEMBLY (WITH COVER)	1

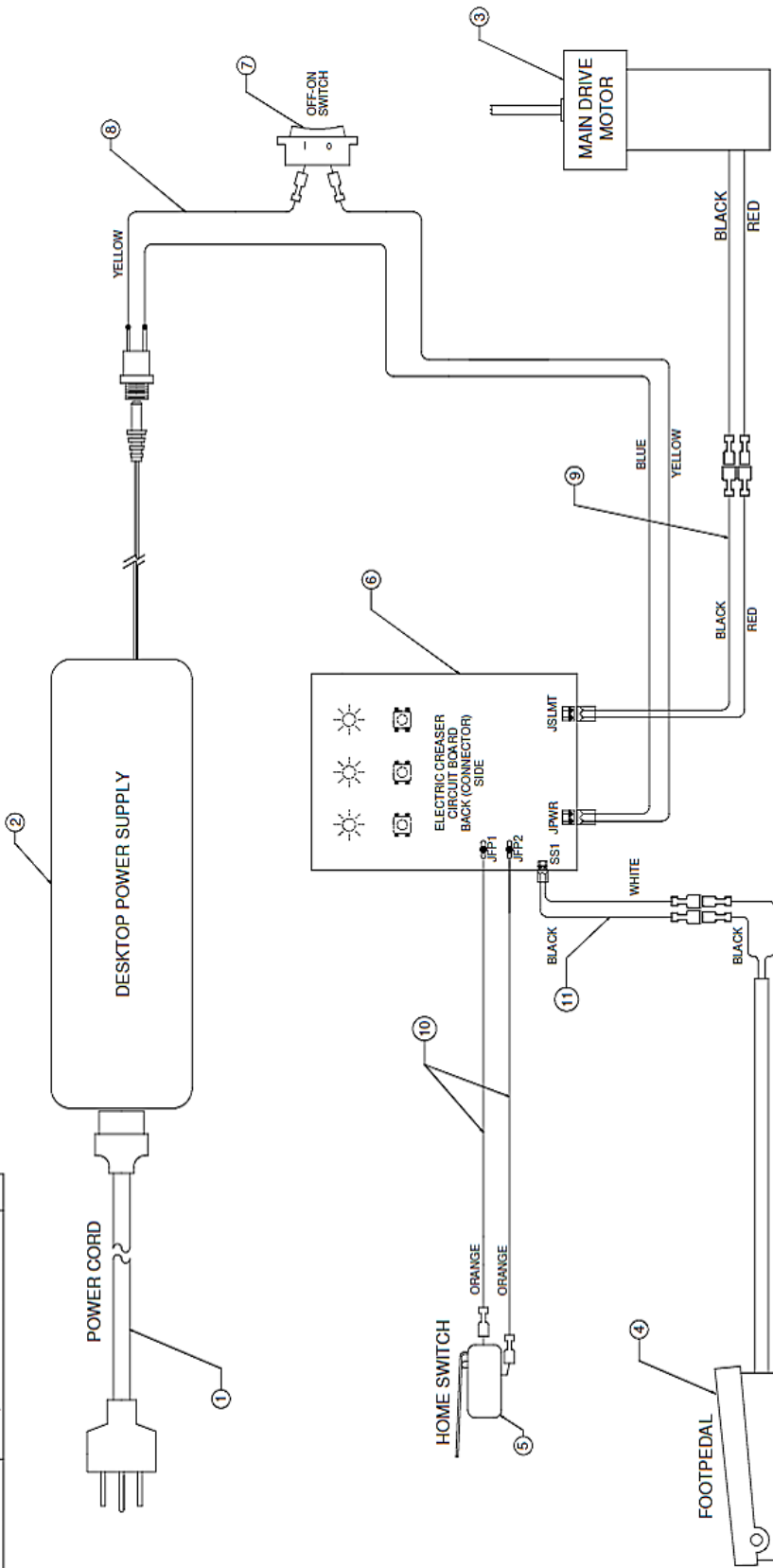
8.2 Diagram B



ITEM	PART NO.	DESCRIPTION	QTY
1	W-O828011	MOTOR COVER	1
2	WRA828013	MOTOR HARDWARE KIT (HUB, SCREWS, SPACERS)	1
3	W-O828009	IDLER STUD	1
4	M-S019085	10-32 X .75 STANDOFF	1
5	M-O03034A	GEAR 24T X 1/2" D-BORE (CAMSHAFT GEAR)	1
6	M-OGCX030	IDLER GEAR, 13T 20P A	1
7	M-O2051208	FEED TABLE SYNCHRO GEAR (MOTOR GEAR)	1
8	M-S010002	5100-37 EXT RET RING (SMALL RETAINING RING)	2
9	M-S010003	5100-50 EXT RET RING (LARGE RETAINING RING)	1
10	W-O828017	GEAR COVER	1
11	M-S003101	10-32 X 3/8 BUTT HD SCR (COVER SCREWS)	7

9.0 Wiring Diagram

Fig.	Part Number	Description	Qty.
1	M-S045074	18-3 SVT 2M CORD	1
2	M-S045436	24V, 3.75A, TABLE TOP POWER	1
3	W-A828504	ELECT. CREASER GEARM, ASSE.	1
4	W-A828501	ELECT. CREASER FOOTP. ASSE.	1
5	M-S033040	MICROSWITCH	1
6	M-O828100	PCB, ELECTRIC CREASER	1
7	M-S033063	SPST ROCKER SWITCH O-I	1
8	M-O828502	POWER JACK ASSEM. EL. CREAS.	1
9	M-O828505	MOTOR TO BOARD WIRE, EL. CR.	1
10	M-O828506	HOME SW. WIRE, EL. CREASER	2
11	M-O828507	WIRE, CR828 FP TO BOARD	1



251 Wedcor Drive • Wabash, IN 46992
 Phone (260) 563-0641 • Fax # (260) 563-4575

Website: www.martinyale.com • Email: info@martinyale.com