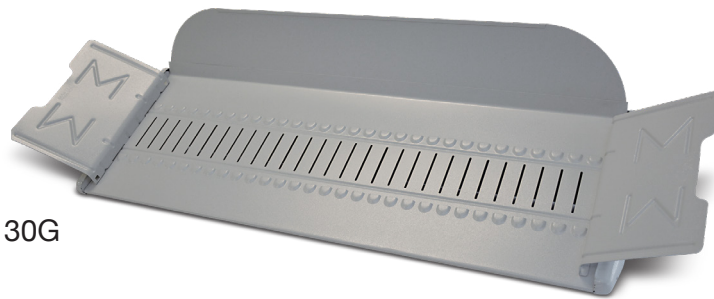




Master™ Shielded Steel Countertop Racks



24G



30G

Organizes and displays catalogs, magazines and loose-leaf materials
Available in 24" and 30" filing capacities

- Shielded for one-sided viewing only, at a 30° angle
- Tongue and groove slots provide easy insertion and removal of sections
- Made with heavy-gauge steel construction
- Available accessories include: 1" or 2" ring sections or 1" or 2" post sections, sold separately

SPECIFICATIONS:

Model No.:	24G	30G
Application:	Countertop	Countertop
Filling Capacity: (inch)	24	30
Length Wing to Wing: (inch)	40	48
Dimensions: (W x D x H approx. inch)	32.5 x 15 x 13	39.75 x 15 x 13
Weight: (approx. ounces/lbs.)	19 lbs.	21 lbs.